

VOLVO PENTA

Volvo Penta of the Americas
1300 Volvo Penta Drive
Chesapeake, Virginia 23320-9810

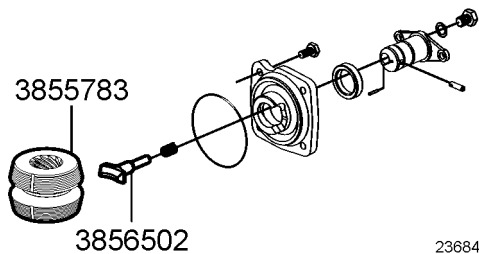
Parts Bulletin

Group	Number	Version
P-44-1	8	01

Shift mechanism, shift cone & shoe

Models: Sterndrives, Saildrives, Inboards

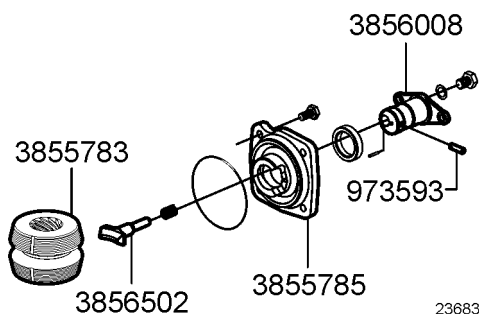
Distribution: Parts Date: March 2005 (original 1998) Replaces: VPA 64-911, VPS 48-38



The shift cones (sliding sleeves) listed in earlier catalogs have been replaced by an improved shift cone, 3855783. When using this new cone to repair earlier drives or transmissions, you must use new shift shoe 3856502 with the new cone. Do not use the shift shoe mated to the original cone or shown with the original cone in the catalogs.

Note! Use of these earlier shoes with the new cone could damage the cone. It may also cause poor shifting.

Earlier cones affected by this change are replaced in the parts systems. If an earlier cone is ordered the system will replace it with a new cone and new shoe.



The improved cone and shoe were part of a group of new parts released to improve shifting. The new parts are shown in the diagram.

Also see Parts Bulletin P-44-1-7.

These newer parts replace many earlier shift parts. In most cases the earlier part is replaced by more than one of the newer parts. Always use all of the new parts specified in the replacement. The newer parts are designed to work together and can not be mixed with the older parts.

The parts not listed in the illustration are the same for the newer and earlier versions of the shift mechanism.